

User's Guide model 28512



DECT Cordless Telephone

Your new GE telephone system is **EXPANDABLE** up to 4 handsets



visit our website:
www.thehomephones.com

Model 28512
P/N:XXXXXXXX
CE-F Version 1.3 02/2011
Printed in China
© 2010 CCT Tech Global Limited



is a trademark of
The General Electric Company
and is under license by
CCT Tech Global Limited,
Central, Hong Kong

Introduction

CAUTION: When using telephone equipment, there are basic safety instructions that should always be followed. Refer to the Important safety instructions section in this book and save them for future reference.

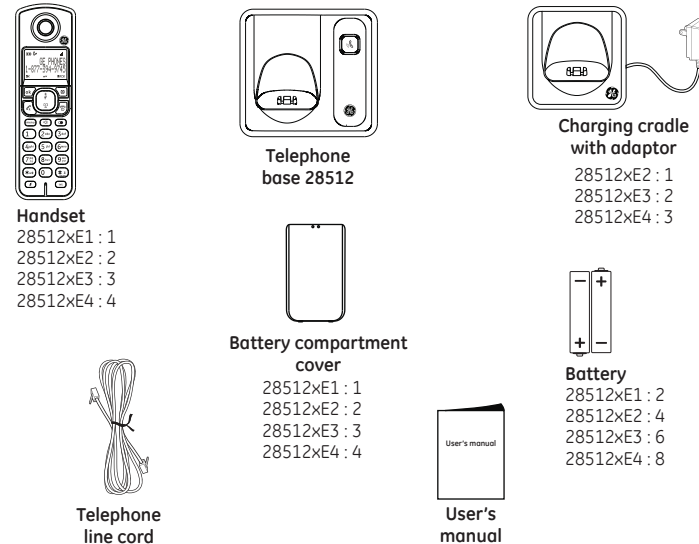
This 28512 telephone is compliant with the DECT™ standard. It is designed to transmit and receive telephone calls and be collected to the certain public telephonic networks.
*DECT is the trademark registered by ETSI.

IMPORTANT: Because cordless phones operate on electricity, you should have at least one phone in your home that isn't cordless, in case the power in your home goes out.

Before you begin

Parts Checklist

Make sure your package includes the items shown here.



Installation

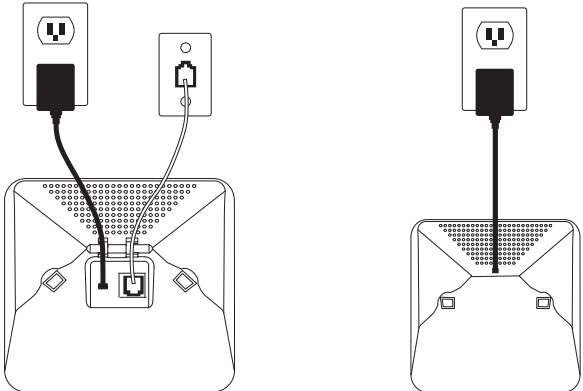
Important Installation Guidelines

- Avoid sources of noise and heat, such as motors, fluorescent lighting, microwave ovens, heating appliances and direct sunlight.
- Avoid areas of excessive dust, moisture and low temperature.
- Avoid other cordless telephones or personal computers.
- Never install telephone wiring during a lightning storm.
- Never install telephone jacks in wet locations unless the jack is specifically designed for wet locations.
- Never touch non-insulated telephone wires or terminals, unless the telephone line has been disconnected at the network interface.
- Use caution when installing or modifying telephone lines.

Installing the phone

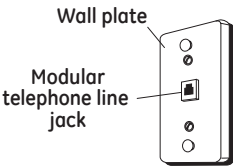
Telephone base and charging cradle installation

Install the telephone base and charging cradles as shown below. Make sure that the electrical outlet is not controlled by a wall switch.
If you have DSL high speed internet service, a DSL filter is required (not included). Contact your DSL service provider for more information about DSL filter.



Telephone Jack Requirements

To use this phone, you need an RJ11C type modular telephone jack, which might look like the one pictured here, installed in your home. If you don't have a modular jack, call your local phone company to find out how to get one installed.



CAUTION: Use only the power adaptor that came with this unit.
(Base: IA5060, 100-240Vac/6Vdc/500mA.
Charger: IA5060, 100-240Vac/6Vdc/500mA).
Using other power adaptors may damage the unit.

Installing the Handset Battery

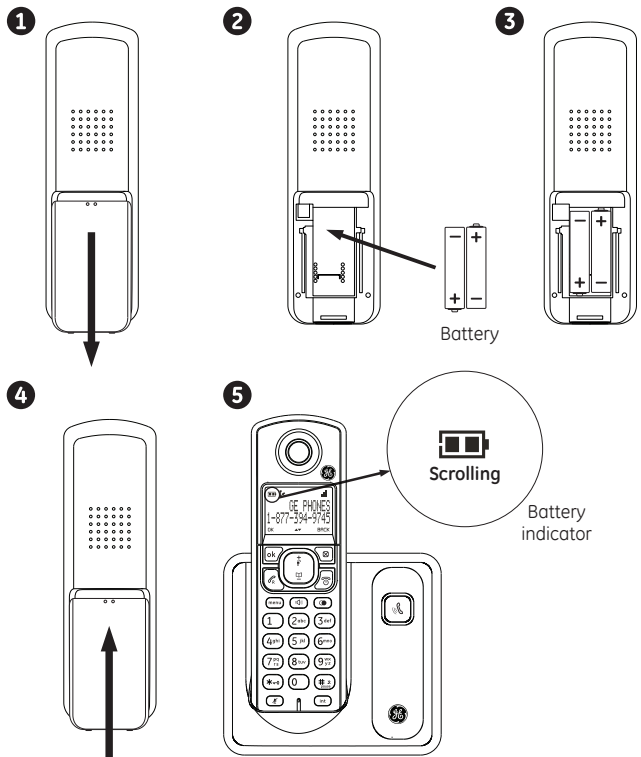
CAUTION: To reduce the risk of fire or personal injury, use only the CCT Tech Global Limited approved Nickel-metal Hydride battery (Ni-MH), which is compatible with this unit

RISK OF EXPLOSION IF BATTERY IS REPLACED BY AN INCORRECT TYPE.
DISPOSE OF USED BATTERIES ACCORDING TO THE INSTRUCTIONS.

1. Make sure the battery compartment cover is not attached with the handset.
2. Insert the AAA rechargeable batteries as shown on the engraving in the battery compartment.
3. Align the cover against the battery compartment and slide it upwards until it clicks into place.
4. Charge the handset by placing it in the telephone base. The light on the handset is on when charging.

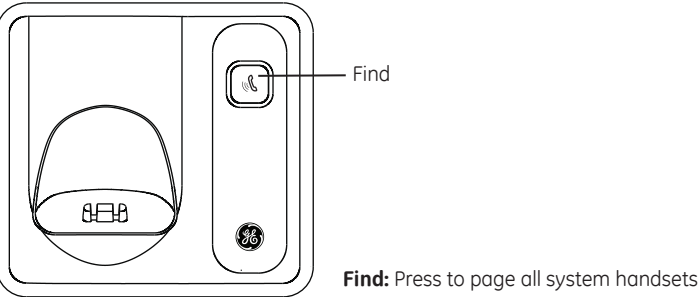
Please Fully Charge Before Using!

For optimum battery performance, charge the battery for 16 hours before use.

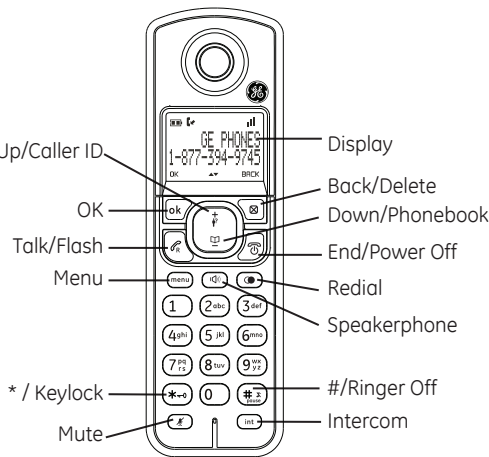


Base layout

Basic Base



Handset layout



OK: Press to select an item, or save an entry or settings.

Delete: Press to delete the last input number or letter. While in a menu, press to return the upper level without making changes.

Up/CID: Press to review the call log when the telephone is not in use. While in a menu, press to scroll up. During a call, press to increase the listening volume.

Down/Phonebook: Press to review the phonebook when the telephone is not in use. While in a menu, press to scroll down. During a call, press to decrease the listening volume.

Talk/Flash: Press to make or answer a call. During a call, press to answer an incoming call when you receive a call waiting alert.

Speakerphone: Press to make or answer a call though speakerphone.

During a call, press to switch between speakerphone and handset

End/Power off: During a call, press to hang up. During a programming, press to exit without making changes. Press and hold to power off the handset

Menu: Press to show menu.

Redial: Press to review redial list.
***/Keylock:** Press and hold to set the keylock (Keylock will de-activate when handset sit on the charge cradle)

#/Ringer off: Press and hold to set the Ringer off when the telephone is not in use.

Mute: While on a call, press to mute the microphone.

Intercom: Set up the intercom between handset to handset.

Display

Handset Display Items

Item	Meaning
	• Turn on when base unit in range • Blinking when base out of range
	• Turn on during review the phone book
	• Battery Level
	• Blinking when there is incoming call • Steady on during a call
	• Blinking when there is Voice mail
	• Turn on when Alarm set
	• Turn on when ringer off set
	• Turn on during review the call log and there is old record(s) in call log

Initial settings

Display language

You can select change the display language.

1. [menu]
2. []/[]: "SETTINGS" → [OK]
3. []/[]: "LANGUAGE" → [OK]
4. []/[]: Select the desired setting
5. [OK] → []

Dialing mode

If you cannot make calls, change this setting according to your telephone line service. The default setting is "TONE"

1. [menu]
2. []/[]: "ADV. SETTINGS" → [OK]
3. []/[]: "DIALING MODE" → [OK]
4. []/[]: Select the desired setting
5. [OK] → []

Date and time

1. [menu]
2. []/[]: "CLOCK&ALARM" → [OK]
3. []/[]: "DATE & TIME" → [OK]
4. Enter the current year, month and date by selecting 2 digits.
Example: May 16, 2010
Press [1][0][0][5][1][6]

5. Enter the current hour and minutes by selecting 2 digits.
Example: 9:30 am
Press [0][9][3][0]

Press []/[]: Select am or pm

6. [OK] → []

Note: You can change date and time display format

Date format

1. [menu]
2. []/[]: "CLOCK&ALARM" → [OK]
3. []/[]: "SET FORMAT" → [OK]
4. []/[]: "DATE FORMAT" → [OK]
5. []/[]: Select the desired setting (MM/DD OR DD/MM)
6. [OK] → []

Time format

1. [menu]
2. []/[]: "CLOCK&ALARM" → [OK]
3. []/[]: "SET FORMAT" → [OK]
4. []/[]: "TIME FORMAT" → [OK]
5. []/[]: Select the desired setting (12 HOURS OR 24 HOURS)
6. [OK] → []

Ringer Volume

1. [menu]
2. []/[]: "SETTINGS" → [OK]
3. []/[]: "RINGER & TONES" → [OK]
4. []/[]: "RINGER VOLUME" → [OK]
5. []/[]: Select the desired setting (VOLUME 1 to 4 and OFF)
6. [OK] → []

Note: If Ringer off is selected, LCD will show "RINGER OFF" and [] will turn on.

Ring Tone

1. [menu]
2. []/[]: "SETTINGS" → [OK]
3. []/[]: "RINGER & TONES" → [OK]
4. []/[]: "RING TONE" → [OK]
5. []/[]: Select the desired setting (MELODY 1 to 10)
6. [OK] → []

Note: If Ringer off is selected, there is no preview during the ringer melody selection.

Making calls

1. Lift the handset and dial the phone number
To correct a digit, press []
2. Press [] or []
3. When you finish talking, press [] or place the handset on the base unit or charger.

Adjusting the receiver volume

Press [] or [] repeatedly while talking

Answering calls

When a call is being received, the LCD and keypad backlight flash rapidly

1. Lift the handset and press [] or [] when the unit rings
2. When you finish talking, press [] or place the handset on the base unit or charger

Conference

To join the conversation, press [] or [] when other handset is on an outside call.

Making a call using the redial list

The last 5 numbers dialed are stored in the redial list (each 24 digits max)

1. Press []
2. Press []/[]: Select the desired phone number
3. Press [] or [].

Erasing a number in redial list

1. Press []
2. Press []/[]: Select the desired phone number → [menu]
3. []/[]: "DELETE" or "DELETE ALL" → [OK]
4. Press [OK] to confirm

Other Feature during a call

Mute

While mute is turned on, you can hear the other party, but the other party cannot hear you.

1. Press [] during the call
2. To return the call, Press [] again

Note: LCD will show "MUTE ON" when mute feature activated

For Call waiting or Call Waiting Caller ID service subscriber

To use call waiting, you must subscribe to call waiting from your service provider. This feature allows you to receive calls while you are already talking on the phone, you will hear a call waiting tone. If you subscribe to both Caller ID and Call Waiting with Caller ID services, the 2nd caller's information is displayed after you hear the call waiting tone on the handset.

1. Press [] to answer the 2nd call
2. To switch between calls, press []

Pause (for PBX/long distance service users)

A pause is sometimes required when making calls using a PBX or long distance service. When storing a calling card access number and/or PIN in the phonebook, a pause is also needed.

Example: If you need to dial the line access number "9" when making outside calls with PBX:

1. Press [9], then long press []
2. Dial the phone number and press [] or [].

Note: A 3 second pause is inserted each time, repeat as needed to create longer pauses

Phonebook

Adding record

1. [menu]
2. []/[]: "PHONEBOOK" → [OK]
3. []/[]: "NEW ENTRY" → [OK]
4. Enter the name (max. 12 character) → [OK]
5. Enter the number (max. 24 digits) → [OK]
6. []

Character Table for the entering names

Key	Character
[1]	Space 1 < > *
[2]	A B C 2
[3]	D E F 3
[4]	G H I 4
[5]	J L K 5
[6]	M N O 6
[7]	P Q R S 7
[8]	T U V 8
[9]	W X Y Z 9
[0]	0 - / \ # +

Correct the mistake

Press [] to delete the characters or numbers

View a phonebook record

1. Press [] when handset not in use.
2. Press []/[] to select desired record
3. Press [OK] to view the name and number

Make a call from phonebook

1. []
2. []/[]: Select the desired record
3. [] or []

Searching by first character

- []
- Press [1] – [9] which contains the character you are searching for
- [] / [] : Select the desired record if necessary
- [] or []

Editing entries

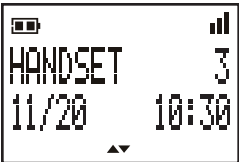
- Find the desired record → [**menu**]
- [] / [] : "EDIT ENTRY"
- Edit the name if necessary → [**OK**]
- Edit the number if necessary → [**OK**]
- []

Erasing entries

- Find the desired record → [**menu**]
- [] / [] : "DELETE" or "DELETE ALL" → [**OK**]
- Press [**OK**] to confirm
- []

Programming the Telephone

Standby Screen



Programmable settings

You can customize the unit by programming the following features using the handset.

Programming by scrolling through the display menus

- [**menu**]
- Press [] or [] to select the desired main menu. → [**OK**]
- Press [] or [] to select the desired item in sub-menu 1. → [**OK**]
 - In some cases, you may need to select from sub-menu 2. → [**OK**]
- Press [] or [] to select the desired setting. → [**OK**]
 - This step may vary depending on the feature being programmed
 - To exit the operation, press []

Main Menu	Sub -menu 1	Sub -menu 2
PHONEBOOK	NEW ENTRY	
	VIEW ENTRY	
	EDIT ENTRY	
	DELETE	
	DELETE ALL	
CLOCK & ALARM	DIRECT MEM.	
	DATE & TIME	
	SET FORMAT	TIME FORMAT
	ALARM	DATE FORMAT
	ALARM MELODY	
SETTINGS	HANDSET NAME	
	RINGER & TONES	RING VOLUME
		RING TONE
		KEY TONE
	LANGUAGE	
ADV. SETTINGS	AUTO HANG UP	
	CHANGE PIN	
	REGISTRATION	
	DEREGISTER	
	RESET	
	RECALL TIME	
	DIALING MODE	

Alarm

An alarm sounds at the set time for 1 minute once or daily. Alarm can be set for each handset.

Important: Set the date and time beforehand

- [**menu**]
- press [] / [] to select "CLOCK&ALARM". → [**OK**]
- Press [] or [] to select "ALARM". → [**OK**]
- Press [] / [] to select the desired alarm option. → [**OK**]
 - OFF: Turns alarm off. (Go to step 6)
 - ON ONCE: An alarm sounds once at the set time
 - ON DAILY: An alarm sounds daily at the set time.
- Set the desired time.
- Alarm set (or turned off) and press [] return to idle

Alarm melody:

You can select from 3 alarm melody

- [**menu**]
- press [] / [] to select "CLOCK&ALARM". → [**OK**]
- Press [] or [] to select "ALARM MELODY". → [**OK**]
- Press [] / [] to select the desired alarm melody. → [**OK**]
- Alarm melody set and press [] return to idle

PIN (Personal Identification Number)

important: If you change the PIN, please make note of your new PIN. The unit will not reveal the PIN to you. If you forget your PIN, please reset your phone. The default PIN is 0000.

To change PIN:

- Press [**menu**], then
- Press [] / [] to select "ADV. SETTINGS" and press [**OK**], then
- Press [] / [] to select "CHANGE PIN" and press [**OK**], then
- Input the old 4 digits PIN (default: 0000) and press [**OK**], then
- Input the new PIN and press [**OK**], then
- A beep sound emit after PIN changed

Registering a handset

Additional handset

The base unit of this telephone can support up to a total of 4 cordless handsets. The handsets that ship with your main base are pre-registered in the factory. To add or re-register a handset:

Handset:

- [**menu**]

- [] / [] : "ADV. SETTINGS" → [**OK**]

- [] / [] : "REGISTRATION" → [**OK**]

- Enter you PIN (default PIN: 0000) and press [**OK**], then
- Handset will show "WAITING"
- Base:**
- Press and hold the [] for 5 seconds. For 28522, the base LED will blink rapidly.

Handset:

- Handset will have a long beep when success register

Note: An error tone will emit when the registration not success

Important:

The unit shall able to register with 28502xxx-A only

Deregistering a handset

- [**menu**]
- [] / [] : "ADV. SETTINGS" → [**OK**]
- [] / [] : "DEREGISTER" → [**OK**]

- Enter you PIN (default PIN: 0000) → [**OK**]

- [] / [] : Select the desired handset → [**OK**]

- []

Using Caller ID service

IMPORTANT: In order to use this unit's Caller ID features, you must subscribe to either the standard Name/Number Caller ID Service or Call Waiting Caller ID Service. To know who is calling while you are on the phone, you must subscribe to Call Waiting Caller ID Service.

This unit receives and displays information transmitted by your local phone company. This information can include the phone number, date, and time; or the name, phone number, date, and time.

Receiving CID Records

Caller ID records are stored in the order that they are received.

Storing CID Records (In CID Memory)

If you are not at home or cannot answer, your telephone's Caller ID memory stores the data for the 10 most recent calls. When the 11th call is received, the oldest Caller ID record (1st call) is automatically deleted.

Reviewing CID Records and call back

As calls are received and stored, the display is updated to let you know how many calls have been received. To scroll CID records:

- []
- Press [] to search from the most recent call, or [] to search from the oldest call.
- To Call back, press []
- To Exit, press [] return to idle

Editing a caller's phone number calling back

You can edit a phone number in the caller list by removing its area code and/or the long distance code "1"

- []

- Press [] / [] to select the desired record → [**OK**]

- If the desired record is a name, Press [**OK**] to show the number

- []

OR

You can edit the number you want

- []

- Press [] / [] to select the desired record → [**menu**]

- Press [] / [] to select "EDIT ENTRY" → [**OK**]

- Enter the number if necessary

- Press [**OK**] to save the new number in the record or press [] dial out the number

Delete a CID record

- []

- [] / [] : Select the desired record → [**menu**]

- [] / [] : "DELETE" or "DELETE ALL" → [**OK**]

- Press [**OK**] to confirm

- []

Store a CID record

- []

- [] / [] : Select the desired record → [**menu**]

- [] / [] : "SAVE NUMBER" → [**OK**]

- Enter the name and number → [**OK**]

- []

Voice mail service

The [] on LCD flash when you receive a new message from your service provider.

IMPORTANT:

If you use this unit's Visual Message Waiting Indicator (VMWI) feature, you must subscribe to this service from your phone company.

Intercom

Intercom calls can be made between handsets

Note:

If you receive an outside call while talking on the intercom, you hear beep. To answer the call with the handset, long press [*] to switch the outside call and intercom

While paging a handset, the paged handset beeps for 1 minute.

Making an intercom call

- [**int**]
- Select the handset you want to page by pressing the desired handset number ([1] –[4]) or you can page all handset by pressing [*****]
- When you finish talking, press [].

Note: No handset number is needed in a two registered handset system.

Answering an intercom call

- Press [] to answer the page
- When you finish talking, press []

Handset locator

You can locate a misplaced handset by paging it.

- Base unit: []

All register handsets beep for 1 minute.

- To stop paging:

Base Unit: Press []

Handset: Press []

Transferring calls

Outside calls can be transferred or a conference call with an outside party can be made between 2 handsets.

- During outside call, press [**int**]
- Select the handset you want to page by pressing the desired handset number ([1] –[4]) or you can page all handset by pressing [*****]
- Press []
- The call will transfer to the paged handset
- For conference call
- Setup a intercom during a call, and long press [**int**]
- LCD will show "CONFERENCE"

Changing the battery



CAUTION: To reduce the risk of fire or personal injury, use only the CCT Tech Global Limited approved Nickel-metal Hydride battery (Ni-MH), which is compatible with this unit.

- Make sure the telephone is **OFF** (not in TALK mode) before you replace the battery.
- Remove the battery compartment door.
- Disconnect the cord attached to the battery pack and remove the battery pack from the handset.
- Insert the new battery pack and connect the cord to the jack inside the battery compartment.
- Put the battery compartment door back on.
- Place handset in the base or handset charge cradle to charge. **Allow the handset battery to properly charge for 16 hours prior to first use or when you install a new battery pack. If you do not properly charge the phone, battery performance will be compromised.**

Battery Safety Precautions

- Do not burn, disassemble, mutilate, or puncture. Like other batteries of this type, toxic materials could be released which can cause injury.
- To reduce the risk of fire or personal injury, use only the battery listed in the User's Guide.
- Keep batteries out of the reach of children.
- Remove batteries if storing over 30 day

Troubleshooting guide

Telephone general use

Problem	Cause/solution
The handset does not turn on even after installing battery pack	- Place the handset on the base unit or charger to turn on the handset.
The unit does not work	- Make sure the battery pack is installed correctly. - Fully charge the battery. Check the connections. (for 16 hours) - Unplug the base unit's AC adaptor to reset the unit. Reconnect the adaptor and try again. - The handset has not been registered to the base unit. Register the handset.
Cannot hear a dial tone	- The base unit's AC adaptor or telephone line cord is not connected. Check the connections. - Disconnect the base unit from the telephone line and connect the line to a known working telephone. If the working telephone operates properly, contact our service personnel to have the unit repaired. If the working telephone does not operate properly, contact your service provider/telephone company. The ringer volume is turned off. Adjust the ringer volume.
Handset does not ring	- The handset may be out of range of the base. Move closer to the base. - The handset may be out of range of the base. Move closer to base.
You experience static, noise, or fading in and out	- You are using the handset or base unit in an area with high electrical interference. Reposition the base unit and use the handset away from sources of interference.

Caller ID

Problem	Cause/solution
Caller information is not displayed	- You must subscribe to Caller ID service from your service provider/telephone company. - If your unit is connected to any additional telephone equipment such as a Caller ID box or cordless telephone line jack, plug the unit directly into wall jack. - If you use a DSL/ADSL service, we recommend connecting a DSL/ADSL filter between the base unit and the telephone line jack. Contact your DSL/ADSL provider for details. - The name display service may not be available in some areas. Contact your service provider/telephone company for details. - Other telephone equipment may be interfering with this unit. disconnect the other equipment and try again.
Caller information is displayed late	- Depending on your service provider /telephone company, the unit may display the caller's information at the 2nd ring or later. - Move closer to the base units.
The 2nd caller's information is not displayed during an outside call	- In order to use Caller ID, call waiting, or Call Waiting Caller ID (CWDI), you must first contact your service provider/telephone company and subscribe to the desired service.

General product care

To keep your unit working and looking good, follow these guidelines:

- Avoid dropping the handset, as well as other rough treatment to the phone.
- Clean the phone with a soft cloth.
- Never use strong cleaning agents, paint thinner, abrasive powder, alcohol, or other chemical products to clean the unit. Doing so will damage the finish.
- Retain the original packaging in case you need to ship the phone at a later date.
- Periodically clean the charge contacts on the handset and base with a clean pencil eraser.

Important safety intructions

Some of the following information may not apply to your particular product; however, when using telephone equipment, basic safety precautions should always be followed to reduce the risk of fire, electric shock and injury to persons, including the following:

- Read and understand all instructions.
- Follow all warnings and instructions marked on the product.
- Unplug this product from the wall outlet before cleaning. Do not use liquid cleaners or aerosol cleaners. Use a damp cloth for cleaning.
- Telephones should not be used while you are in a bathtub, shower or pool. Immersion of the telephone or handset in water could cause an electrical shock.
- Slots and openings in the cabinet back or bottom are provided for ventilation, to protect it from overheating. Do not block or cover these openings. Do not block the openings by placing the product on a bed, sofa, rug, or other similar surface. Do not place this product in a built-in installation unless proper ventilation is provided.
- Only operate this product from the type of power source indicated on the marking label. If you are not sure of the type of power supply to your home, consult your dealer or local power company.
- Plug the adaptor into an easily accessible electrical outlet near the equipment.
- Do not allow anything to rest on the power cord. Do not locate this product where the cord will be abused by persons walking on it.
- Do not overload wall outlets and extension cords as this can result in the risk of fire or electric shock.
- Never push objects of any kind into this product through cabinet slots as they may touch dangerous voltage points or short out parts that could result in a risk of fire or electric shock. Never spill liquid of any kind on the product.
- Never spill liquid of any kind on the product.
- To reduce the risk of electric shock, do not disassemble this product. If service or repair work is required, take it to a qualified serviceman. Opening or removing covers may expose you to dangerous voltages or other risks. Incorrect reassembly can cause electric shock when the appliance is subsequently used.
- Do not expose the product to extreme temperatures such as areas near a hot radiator, stove or in a hot car. Do not place product upon other consumer electronic products such as; computer monitors, power amplifiers, etc.
- Do not place lighted candles, cigarettes, cigars, etc., on the telephone.
- Never touch uninsulated telephone wires or terminals unless the telephone line has been disconnected at the network interface.
- Never install or modify telephone wiring during a lightning
- Never install telephone jacks in wet locations unless the jack is specifically designed for wet locations.
- Use caution when installing or modifying telephone lines to prevent electrical shock and/or fire.
- Under the following conditions, unplug this product from the wall outlet and refer servicing to qualified service personnel:
 - The power supply cord or plug is damaged or frayed.
 - The product has been exposed to rain or water.

- The product does not operate normally by following the operating instructions.
 - The product's cabinet has been damaged.
 - The product exhibits a distinct change in performance.
- Avoid using a telephone (other than a cordless type) during an electrical storm. There may be a remote risk of electric shock from lightning.
 - Do not use the telephone to report a gas leak in the vicinity of the leak.
 - Do not place this product on an unstable cart, stand, or table. The product may fall, causing serious damage to the product.
 - Only use attachments/accessories specified by the manufacturer.
 - Unplug this apparatus during lightning storms or when unused for long periods of time.

IF YOUR PRODUCT UTILIZES BATTERIES, THE FOLLOWING ADDITIONAL PRECAUTIONS SHOULD BE OBSERVED:

- Use only the type and size battery(ies) specified in the user manual.
- Do not use this product if the battery door is removed or missing.
- Replace batteries that appear to be swollen or have damaged wiring.
- Do not dispose of the battery(ies) in fire. They may explode. Check with local codes for possible special disposal instructions.
- Do not open or mutilate the battery(ies). Released electrolyte is corrosive and may cause damage to the eyes or skin. It may be toxic if swallowed.
- Exercise care in handling battery(ies) in order not to short out the battery(ies) with conducting materials such as rings, bracelets, and keys. The battery(ies) or conductor may overheat and cause burns.
- Do not attempt to recharge the battery(ies) provided with or identified for use with this product that are not rechargeable. The battery(ies) may leak corrosive electrolyte or explode.
- Do not attempt to rejuvenate the battery(ies) provided with or identified for use with this product by heating them. Sudden release of the battery(ies) electrolyte may occur causing burns or irritation to eyes or skin.
- When replacing battery(ies), all batteries should be replaced at the same time. Mixing fresh and discharged batteries could increase internal cell pressure and rupture the discharged battery(ies). (Applies to products employing more than one separately replaceable primary battery.)
- When inserting battery(ies) into this product, the proper polarity or direction must be observed. Reverse insertion of battery(ies) may result in leakage or explosion.
- When inserting battery(ies) into this product, do not twist or pinch the wires or allow wires to become pinched in battery door.
- If storing over 30 days, remove battery(ies) from this product because the battery(ies) could leak and damage the product.
- Discard "dead" battery(ies) as soon as possible since "dead" batteries are more likely to leak in a product.
- Do not store this product, or the battery(ies) provided with or identified for use with this product, in high-temperature areas. Batteries that are stored in a freezer or refrigerator for the purpose of extending shelf life should be protected from condensation during storage and defrosting. Batteries should be stabilized at room temperature prior to use after cold storage.
- If your product uses rechargeable battery(ies), charge the battery(ies) only in accordance with the instructions and limitation specified in the User Guide.

Environment

Used equipment must be disposed of in compliance with current environmental protection regulations. You should return it to your reseller or dispose of it in an approved recycling centre.



Do not attempt to open the batteries as they contain chemical substances. In the event of leakage, avoid contact with the skin, eyes and mouth. In the event of contact, rinse the affected part for several minutes in running water. Clean the product with absorbent paper or a dry cloth and contact your reseller for replacement batteries.

WARNING: TO PREVENT FIRE OR ELECTRICAL SHOCK HAZARD, DO NOT EXPOSE THIS PRODUCT TO RAIN OR MOISTURE.

 THE LIGHTING FLASH AND ARROW HEAD WITHIN THE TRIANGLE IS A WARNING SIGN OF "DANGEROUS VOLTAGE" INSIDE THE PRODUCT.	CAUTION <small>SEE TOP OF ELECTRICAL BOXES FOR HOT SPOTS</small> CAUTION: TO REDUCE THE RISK OF ELECTRICAL SHOCK, DO NOT REMOVE COVER (OR BACK). NO USER SERVICEABLE PARTS INSIDE. REFER SERVICING TO QUALIFIED SERVICE PERSONNEL.	 THE EXCLAMATION WITHIN THE TRIANGLE IS WARNING SIGN ALERTING YOU OF IMPORTANT INSTRUCTIONS ACCOMPANYING THE PRODUCT.
SEE MARKING ON BOTTOM / BACK OF PRODUCT		



R&TTE DECLARATION OF CONFORMITY (DOC)

We,

ATLINS EUROPE
One Gallieni
Boulevard
92240 Clichy
FRANCE

Declare under our sole responsibility that the products CE CE28511, CE CE28511 Duo and OE CE28511 T10 comply:

With the essential requirements and other relevant requirements of the R&TTE Directive (1999/5/EC) based on the following standards:
EN 60950-1 (2006) + A11 (2008)
EN 301408 V2.1.1 (2009)
EN 301408-01 V1 & 1.2 (2009) / EN 301408-08 V1.3.1 (2009)

With Commission regulation (EC) N° 278/2008 of April 6, 2008 implementing Directive 2005/50/EC of the European Parliament and of the Council with regard to eco-design requirements for no-load condition electric power consumption and average active efficiency of electronic household and office equipment

With Commission regulation (EC) no. 1275/2008 of December 17, 2008 implementing Directive 2005/32/EC of the European Parliament and of the Council with regard to energy efficiency requirements for standby and off mode electric power consumption of electrical and electronic household and office equipment

This conformity is understood as being effective if the product for which it is given is installed and used according to the instructions provided in the user's guide

Suzanne Godeau 27th 2010
Didier COLLAUD
CEO ATLINS EUROPE