

DECT 6.0 CORDLESS TELEPHONE

Model: 30501



Visit our website:  
www.thehomephones.com



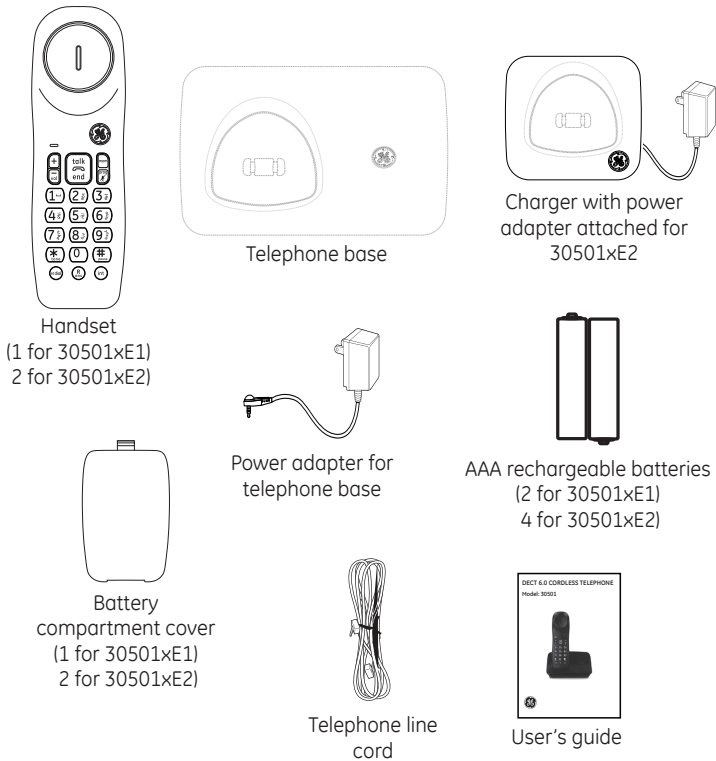
Introduction

**CAUTION:** When using telephone equipment, there are basic safety instructions that should always be followed. Refer to the **Important safety instructions** in this user's guide for more information.

**IMPORTANT:** Since cordless phones operate on electricity, you are suggested to have at least one phone in your home that is not cordless, in case of power outage.

Parts checklist

Make sure your package includes the items shown below.

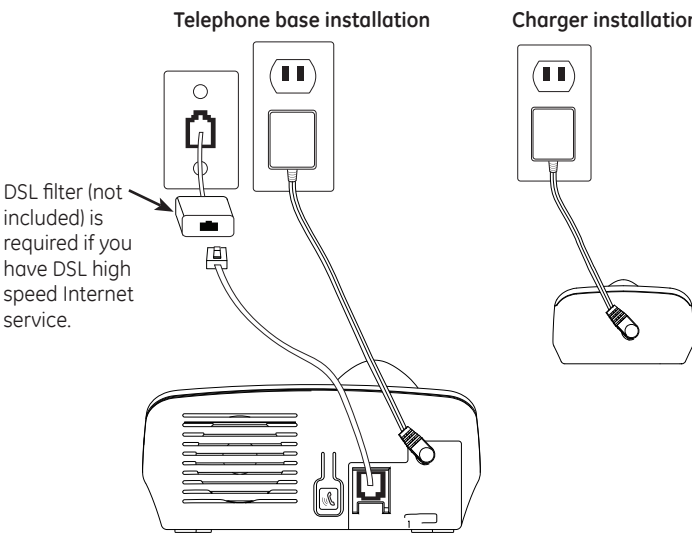


Important installation guidelines

- Avoid sources of noise and heat, such as motors, fluorescent lighting, microwave ovens, heating appliances and direct sunlight.
- Avoid areas of excessive dust, moisture and low temperature.
- Avoid other cordless telephones or personal computers.
- Never install telephone wiring during a lightning storm.
- Never install telephone jacks in wet locations unless the jack is specifically designed for wet locations.
- Never touch non-insulated telephone wires or terminals, unless the telephone line has been disconnected at the network interface.
- Use caution when installing or modifying telephone lines.

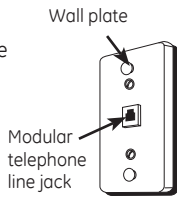
Telephone base and charger installation

Install the telephone base and charger(s) as shown below. Make sure that the electrical outlet is not controlled by a wall switch. If you have DSL high speed Internet service, a DSL filter is required (not included). Contact your DSL service provider for more information about DSL filter.



Telephone Jack Requirements

To use this phone, you need a RJ11C type modular telephone jack, which might look like the one pictured here, installed in your home. If you do not have a modular jack, call your telephone service provider to find out how to have one installed.



**CAUTION:** Use only the power adapter that came with this unit. (Telephone base: 6Vdc/500mA, charger: 6Vdc/500mA) Using other power adapters may damage the unit. Contact your local distributor if you need to order replacement for the power adapters.

Installing the handset battery

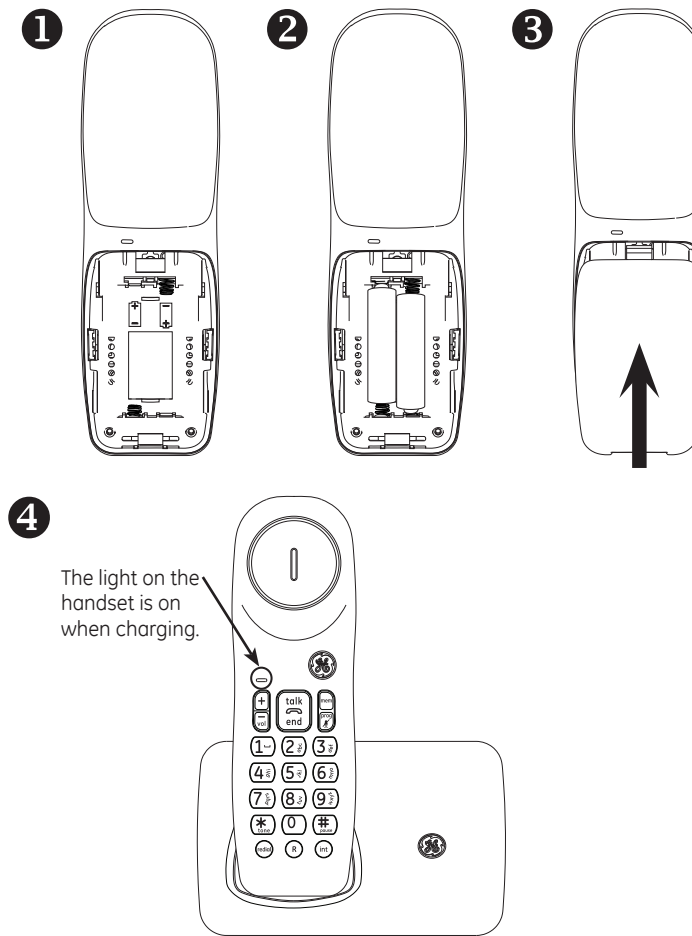
**CAUTION:** To reduce the risk of fire or personal injury, use only the CCT Tech Global Limited approved model (400mAh 1.2V Ni-MH) which is compatible with this unit.

**RISK OF EXPLOSION IF BATTERY IS REPLACED BY AN INCORRECT TYPE. DISPOSE OF USED BATTERIES ACCORDING TO THE INSTRUCTIONS.**

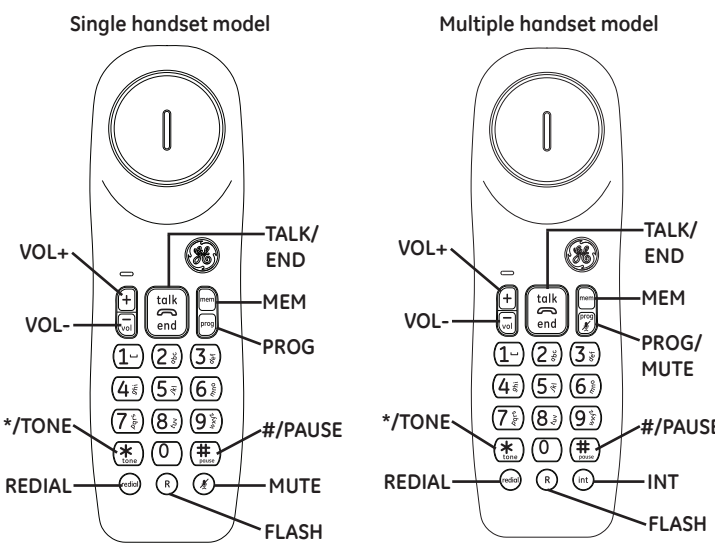
1. Make sure the battery compartment cover is not attached with the handset.
2. Insert the AAA rechargeable batteries into the battery compartment, matching the +/- polarity markings.
3. Align the cover against the battery compartment and slide it upwards until it clicks into place.
4. Charge the handset by placing it in the telephone base or charger. The light on the handset is on when charging.

Please Fully Charge Before Using!

For optimum battery performance, charge the battery for 16 hours before use.

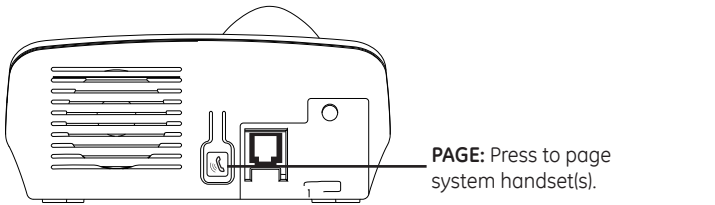


Handset layout



**VOL+:** Press to increase the listening volume during a call; press to increase the ringer volume when the handset is in idle mode.  
**VOL-:** Press to decrease the listening volume during a call; press to decrease the ringer volume when the handset is in idle mode.  
**TALK/END:** Press to make or answer a call; press to end a call.  
**MEM:** Press to save a selection during setting; press to enter the phonebook settings or dial a call from the phonebook.  
**PROG/MUTE:** Press to enter the setting menu; press a mute a call, press again to resume conversation.  
**REDIAL:** Press to call the last dialed number.  
**FLASH:** During a call, press to answer an incoming call if you receive a call waiting alert (if you have subscribed to the call waiting feature from your telephone service provider); press to program answering system settings.  
**\*/TONE:** Press to switch to tone dialing temporarily if you are using pulse dialing service.  
**#/PAUSE:** Press and hold to add a dialing pause when entering numbers into phonebook.

Telephone base layout



Handset light indicator

Indicator light	Status
Flashes slowly	<ul style="list-style-type: none"><li>• The handset battery is being charged when the power is very low.</li><li>• The batteries are not connected to the handset while the handset is put in the telephone base or charger.</li><li>• The handset is using alkaline batteries.</li></ul>
Flashes rapidly	<ul style="list-style-type: none"><li>• There is an incoming call.</li><li>• Programming or handset registration is in progress.</li><li>• The telephone base is paging system handset(s).</li></ul>
On steadily	<ul style="list-style-type: none"><li>• The handset is on a call.</li><li>• The other handset is in use on the same line.</li><li>• The handset is being charged.</li></ul>

Settings

Ringer Volume

You can select the handset ringer volume from four levels.  
Press **VOL+** to increase or **VOL-** to decrease the ringer volume when the handset is in idle mode. A beep sounds when the volume is adjusted to the maximum or minimum level.

Ringer Tone

You can choose one of five ringer tones for the handset.  
1. Press **PROG/MUTE** (multiple handset) or **PROG** (single handset) when the handset is in idle mode.  
2. Press 1 to 5 to sample each ringer tone.  
3. Press the number of the desired ringer tone.  
4. Press **MEM** to confirm your selection and a confirmation tone sounds.

Recall/Flash time

You need to set the recall/flash time to the correct setting to use customer calling services such as call waiting service. You can set the recall/flash time to 1, 2, or 3.  
1. Press **PROG/MUTE** (multiple handset) or **PROG** (single handset) when the handset is in idle mode.  
2. Press 7 to set as 1.  
Press 8 to set as 2.  
Press 9 to set as 3.  
3. Press **MEM** to confirm your selection and a confirmation tone sounds.  
**NOTE:** If you are not sure about the correct setting, contact your telephone service provider for more information.

Dialing mode

1. Press **PROG/MUTE** (multiple handset) or **PROG** (single handset) when the handset is in idle mode.  
2. Press **\*/TONE** to select tone dialing or **#/PAUSE** to select pulse dialing.  
3. Press **MEM** to confirm your selection and a confirmation tone sounds.

Reset

Press **PROG/MUTE** (multiple handset) or **PROG** (single handset) followed by **#1590#** to restore all system settings, except the phonebook entries, to default settings.

Making calls

1. Press **TALK/END** when the handset is in idle mode.
2. Dial the number.
3. Press **TALK/END** or place the handset in the telephone base or charger to end the call.

Answering calls

The handset rings when there is an incoming call.  
1. Press **TALK/END** or lift the handset from the telephone base or charger to answer the call.  
2. Press **TALK/END** or place the handset in the telephone base or charger to end the call.

Making a call using the redial memory

The last number dialed is stored in the redial memory (maximum of 24 digits). Press **TALK/END** and then press **REDIAL**.

Other features during a call

**Adjusting the listening volume**  
You can adjust the listening volume (level 1 to 5) of the handset during a call. Press **VOL+** to increase or **VOL-** to decrease the volume, a beep sounds when the volume is adjusted to the maximum or minimum level.

**Call waiting**  
To use call waiting, you must subscribe to call waiting service from your telephone service provider. This feature allows you to receive calls while you are already on a call. You will hear a call waiting alert tone when there is a second incoming call.  
1. Press **FLASH** to answer the second incoming call.  
2. Press **FLASH** to switch between calls.

**Mute**  
When the mute feature is turned on, you can hear the other party, but the other party cannot hear you.  
1. Press **PROG/MUTE** (multiple handset) or **MUTE** (single handset) during a call.  
2. Press **PROG/MUTE** (multiple handset) or **MUTE** (single handset) again to resume conversation.

Temporary tone dialing

If you have pulse (rotary) dialing service only, you can temporarily switch from pulse to touch-tone dialing during a call.

Press **\*/TONE** during a call to activate this feature. The telephone automatically returns to pulse dialing after you end the call.

Handset paging

You can use the handset paging feature to find misplaced handsets.

Press the **PAGE** button at the back of the telephone base to start the paging tone on the handset for 60 seconds. Press any key on the handset or press the **PAGE** button again to stop the paging.

Using multiple handsets

The system allows a maximum of two handsets to have a conversation with an outside call at a time. If a handset is already on a call and you would like to join the call, press **TALK/END** on another handset.

The call will not be terminated until all handsets hang up.

Registering a handset

The handset included in the package is pre-registered.

To re-register a handset:

- Press and hold **\*/TONE** on the handset until the light indicator flashes.
- Press and hold the **PAGE** button on the back of the telephone base for 5 seconds.

A confirmation tone sounds when the handset is registered to the telephone base successfully.

Deregistering handset

This feature is intended for handset replacement procedures. Handset deregistration is not recommended for normally functioning systems.

- Unplug the power adapter from the telephone base.
- Press and hold the **PAGE** button on the back of the telephone base and then plug the power adapter back in.
- Make sure the **PAGE** button is pressed and held for 10 seconds after plugging back the power adapter.

Phonebook

The telephone system can store up to 10 phonebook entries with up to 24 digits for each entry.

Adding record

- Press **MEM** when the handset is in idle mode.
- Enter a memory location number (0-9).
- Press **MEM**.
- Enter a number up to 24 digits. Press and hold **#/pause** to add a dialing pause between digits if necessary.
- Press **MEM** to save the number and a confirmation tone sounds.

Adding record from redial memory

- Press **MEM** when the handset is in idle mode.
- Enter a memory location number (0-9).
- Press **MEM**.
- Press **REDIAL**.
- Press **MEM** to save the number and a confirmation tone sounds.

Delete an entry

- Press **MEM** when the handset is in idle mode.
- Enter the memory location (0-9) of the desired entry.
- Press **MEM** twice to delete the entry and a confirmation tone sounds.

Dial a phonebook record

- Press **TALK/END** when the handset is in idle mode.
- Press **MEM**.
- Enter the memory location (0-9) of the desired entry. The number will be dialed automatically.

Chain dialing

This feature allows you to initiate a dialing sequence from numbers stored in the phonebook while you are on a call. This feature is useful if you wish to access another numbers (such as bank account information or access code) from the phonebook.

To access a number in the phonebook while on a call:

- Press **MEM**.
- Enter the memory location (0-9) of the desired entry. The number will be dialed automatically.

Intercom (applicable for multiple handset only)

The system allows an intercom call between two handsets registered to the same telephone base. This feature is only applicable to model with more than one handset.

To initiate an intercom call:

- Press **INT**.
- Press **TALK/END** to answer the intercom call on the other handset.
- To end the intercom call, press **TALK/END**.

NOTES:

- The intercom call can be canceled before it is answered by pressing **INT** on the originating handset.
- If the handset being called does not answer within one minute, the paging will be canceled.

To answer an incoming call during intercom

You will hear an alert tone when you receive an incoming call during intercom.

- Press **TALK/END** to answer the incoming call and end the intercom.
- Press **INT** to answer the incoming call and put the intercom on hold. Press **INT** to switch between intercom and the incoming call.
- Press and hold **INT** to conference with both the incoming call and the intercom.

To initiate an intercom during a call

You can intercom with another system handset during a call, or invite another system handset to join.

- Press and hold **INT** during a call to initiate an intercom.
- Press **TALK/END** to answer the intercom on the other handset. The external call is placed on hold while the intercom is established with the other handset.

**NOTE:** The intercom call can be canceled before it is answered by pressing **INT** on the originating handset.

- You can choose from one of the following options for this intercom call.
  - Press and hold **INT** to connect both handsets to the call.
  - Press **INT** on the originating handset to alternate between the intercom and the external call.
  - Press **TALK/END** on either handset to terminate the intercom on that handset. The call will continue on the other handset.

Troubleshooting guide

If your telephone system is not operating properly, first try these general reset procedures:

- Unplug all power adapters from the power outlets.
- Disconnect the telephone line cord from the base or modular jack.
- Remove the battery compartment covers and unplug all handset batteries.
- After a few minutes, re-install all handset batteries.
- Plug the power adapters for the base and any chargers back into their power outlets. Be sure not to use outlets that are controlled by wall switches or timers.
- Place all handsets in the telephone base or chargers to charge without interruption for at least 30 minutes before use.
- Plug the line cord into the telephone base or modular jack and verify operation.

Problem	Cause/solution
The handset does not turn on even after installing batteries.	<ul style="list-style-type: none"><li>Place the handset in the base unit or charger to turn on the handset.</li></ul>
The unit does not work.	<ul style="list-style-type: none"><li>Make sure the batteries are installed correctly.</li><li>Fully charge the battery for 16 hours. Check the connections.</li><li>Unplug the base unit’s AC adapter to reset the unit. Reconnect the adapter and try again.</li><li>The handset has not been registered to the base unit. Register the handset by following the steps below.<ul style="list-style-type: none"><li>i) Press and hold <b>*/TONE</b> on the handset until the light on the handset flashes.</li><li>ii) Press and hold the <b>PAGE</b> button at the back of the telephone base for 5 seconds.</li></ul></li></ul> <p>A confirmation tone sounds when the handset is registered to the telephone base successfully.</p>

Problem	Cause/solution
Cannot hear a dial tone.	<ul style="list-style-type: none"><li>The base unit’s AC adapter or telephone line cord is not connected. Check the connections.</li><li>Disconnect the base unit from the telephone line and connect the line to a known working telephone. If the working telephone operates properly, contact our service personnel to have the unit repaired. If the working telephone does not operate properly, contact your service provider/telephone company.</li></ul>
Handset does not ring.	<ul style="list-style-type: none"><li>The handset may be out of range. Move closer to the base.</li></ul>
You experience static, noise, or fading in and out.	<ul style="list-style-type: none"><li>You are using the handset or base unit in an area with high electrical interference. Reposition the base unit and use the handset away from sources of interference.</li></ul>

General product care

To keep your unit working and looking good, follow these guidelines:

- Avoid dropping the handset, as well as other rough treatment to the phone.
- Clean the phone with a soft cloth.
- Never use strong cleaning agents, paint thinner, abrasive powder, alcohol, or other chemical products to clean the unit. Doing so will damage the finish.
- Retain the original packaging in case you need to ship the phone at a later date.
- Periodically clean the charge contacts on the handset and base with a clean pencil eraser.

Important safety instructions

Some of the following information may not apply to your particular product; however, when using telephone equipment, basic safety precautions should always be followed to reduce the risk of fire, electric shock and injury to persons, including the following:

- Read and understand all instructions.
- Follow all warnings and instructions marked on the product.
- Unplug this product from the wall outlet before cleaning. Do not use liquid cleaners or aerosol cleaners. Use a damp cloth for cleaning.
- Telephones should not be used while you are in a bathtub, shower or pool. Immersion of the telephone or handset in water could cause an electrical shock.
- Slots and openings in the cabinet back or bottom are provided for ventilation, to protect it from overheating. Do not block or cover these openings. Do not block the openings by placing the product on a bed, sofa, rug, or other similar surface. Do not place this product in a built-in installation unless proper ventilation is provided.
- Only operate this product from the type of power source indicated on the marking label. If you are not sure of the type of power supply to your home, consult your dealer or local power company.
- Plug the adapter into an easily accessible electrical outlet near the equipment.
- Do not allow anything to rest on the power cord. Do not locate this product where the cord will be abused by persons walking on it.
- Do not overload wall outlets and extension cords as this can result in the risk of fire or electric shock.
- Never push objects of any kind into this product through cabinet slots as they may touch dangerous voltage points or short out parts that could result in a risk of fire or electric shock. Never spill liquid of any kind on the product.
- Never spill liquid of any kind on the product.
- To reduce the risk of electric shock, do not disassemble this product. If service or repair work is required, take it to a qualified serviceman. Opening or removing covers may expose you to dangerous voltages or other risks. Incorrect reassembly can cause electric shock when the appliance is subsequently used.

- Do not expose the product to extreme temperatures such as areas near a hot radiator, stove or in a hot car. Do not place product upon other consumer electronic products such as; computer monitors, power amplifiers, etc.
- Do not place lighted candles, cigarettes, cigars, etc., on the telephone.
- Never touch uninsulated telephone wires or terminals unless the telephone line has been disconnected at the network interface.
- Never install or modify telephone wiring during a lightning
- Never install telephone jacks in wet locations unless the jack is specifically designed for wet locations.
- Use caution when installing or modifying telephone lines to prevent electrical shock and/or fire.
- Under the following conditions, unplug this product from the wall outlet and refer servicing to qualified service personnel:
  - The power supply cord or plug is damaged or frayed.
  - The product has been exposed to rain or water.
  - The product does not operate normally by following the operating instructions.
  - The product’s cabinet has been damaged.
  - The product exhibits a distinct change in performance.
- Avoid using a telephone (other than a cordless type) during an electrical storm. There may be a remote risk of electric shock from lightning.
- Do not use the telephone to report a gas leak in the vicinity of the leak.
- Do not place this product on an unstable cart, stand, or table. The product may fall, causing serious damage to the product.
- Only use attachments/accessories specified by the manufacturer.
- Unplug this apparatus during lightning storms or when unused for long periods of time.

IF YOUR PRODUCT UTILIZES BATTERIES, THE FOLLOWING ADDITIONAL PRECAUTIONS SHOULD BE OBSERVED:

- Use only the type and size battery(ies) specified in the user manual.
- Do not use this product if the battery door is removed or missing.
- Replace batteries that appear to be swollen or have damaged wiring.
- Do not dispose of the battery(ies) in fire. They may explode. Check with local codes for possible special disposal instructions.
- Do not open or mutilate the battery(ies). Released electrolyte is corrosive and may cause damage to the eyes or skin. It may be toxic if swallowed.
- Exercise care in handling battery(ies) in order not to short out the battery(ies) with conducting materials such as rings, bracelets, and keys. The battery(ies) or conductor may overheat and cause burns.
- Do not attempt to recharge the battery(ies) provided with or identified for use with this product that are not rechargeable. The battery(ies) may leak corrosive electrolyte or explode.
- Do not attempt to rejuvenate the battery(ies) provided with or identified for use with this product by heating them. Sudden release of the battery(ies) electrolyte may occur causing burns or irritation to eyes or skin.
- When replacing battery(ies), all batteries should be replaced at the same time. Mixing fresh and discharged batteries could increase internal cell pressure and rupture the discharged battery(ies). (Applies to products employing more than one separately replaceable primary battery.)
- When inserting battery(ies) into this product, the proper polarity or direction must be observed. Reverse insertion of battery(ies) may result in leakage or explosion.
- When inserting battery(ies) into this product, do not twist or pinch the wires or allow wires to become pinched in battery door.
- If storing over 30 days, remove battery(ies) from this product because the battery(ies) could leak and damage the product.
- Discard “dead” battery(ies) as soon as possible since “dead” batteries are more likely to leak in a product.
- Do not store this product, or the battery(ies) provided with or identified for use with this product, in high-temperature areas. Batteries that are stored in a freezer or refrigerator for the purpose of extending shelf life should be protected from condensation during storage and defrosting. Batteries should be stabilized at room temperature prior to use after cold storage.
- If your product uses rechargeable battery(ies), charge the battery(ies) only in accordance with the instructions and limitation specified in the User’s Guide.



Environment

Used equipment must be disposed of in compliance with current environmental protection regulations. You should return it to you reseller or dispose of it in an approved recycling center.



Do not attempt to open the batteries as they contain chemical substances. In the event of leakage, avoid contact with the skin, eyes and mouth. In the event of contact, rinse the affected part for several minutes in running water. Clean the product with absorbent paper or a dry cloth and contact your reseller for replacement batteries.

**WARNING: TO PREVENT FIRE OR ELECTRICAL SHOCK HAZARD, DO NOT EXPOSE THIS PRODUCT TO RAIN OR MOISTURE.**

 THE LIGHTNING FLASH AND ARROW HEAD WITHIN THE TRIANGLE IS A WARNING SIGN ALERTING YOU OF "DANGEROUS VOLTAGE" INSIDE THE PRODUCT.	<b>CAUTION</b> <small>RISK OF ELECTRICAL SHOCK, DO NOT OPEN</small> CAUTION: TO REDUCE THE RISK OF ELECTRICAL SHOCK, DO NOT REMOVE COVER (OR BACK). NO USER SERVICEABLE PARTS INSIDE. REFER SERVICING TO QUALIFIED SERVICE PERSONNEL.	 THE EXCLAMATION POINT WITHIN THE TRIANGLE IS A WARNING SIGN ALERTING YOU OF IMPORTANT INSTRUCTIONS ACCOMPANYING THE PRODUCT.
---	---	---